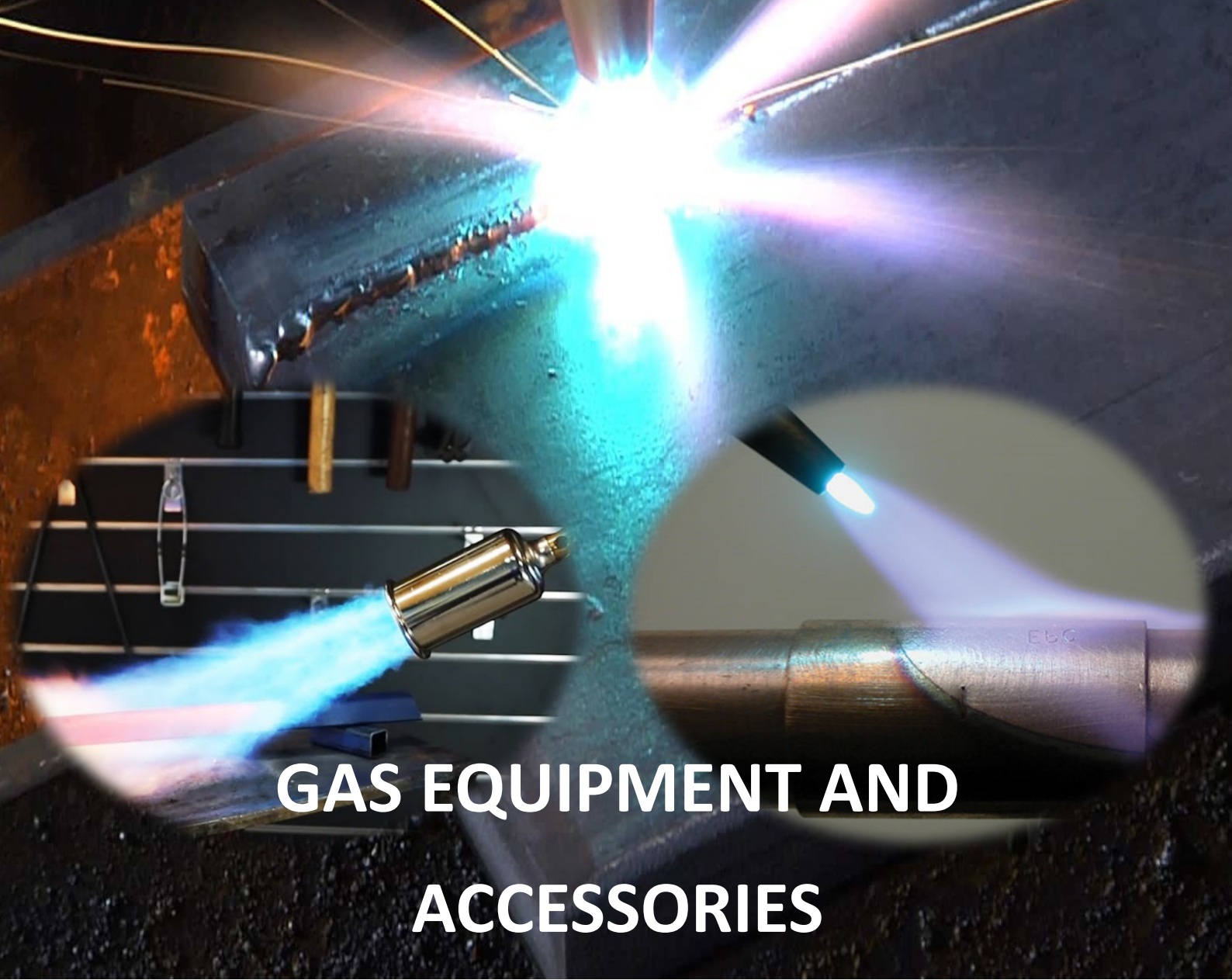


The Taurus logo features a stylized red bull head profile above the word "TAURUS" in a bold, blue, sans-serif font, followed by a registered trademark symbol (®).

TAURUS®

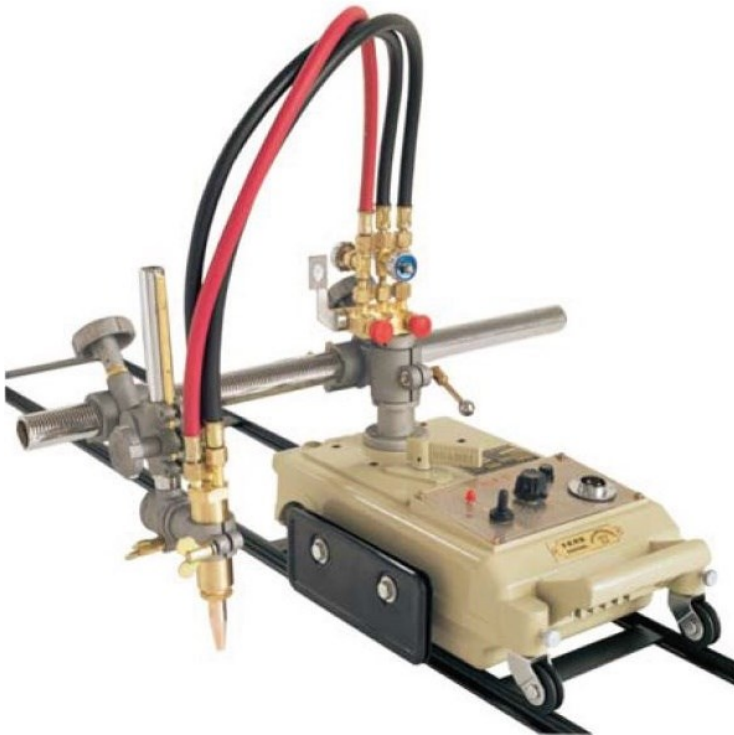


**GAS EQUIPMENT AND
ACCESSORIES**

INDEX

DESCRIPTION	PAGE
AUTOMATION	3
MINIPAK	4 - 7
REGULATORS	8 - 10
FLOWMETERS	11 - 12
GAS TORCH	13 - 15
QUICK RELEASE COUPLINGS	16
FLASHBACK ARRESTORS	17
COMBINATION KIT	18
LPG HEATING	19 - 21
OXYGEN-LPG HEATING	22
CUTTING NOZZLES	23 - 26
BRAZING NOZZLES	27
GAS HOSES	28
CYLINDER TROLLEYS	29
LIGHTERS AND NOZZLE CLEANERS	30
Y-PIECES	31
GAS HOSE ACCESSORIES	32 - 33
REGULATOR ACCESSORIES	34
GAS TORCH NOZZLE NUT	35

TAURUS CG1-30 STRAIGHT LINE CUTTER



The straight line cutter CG1-30 is a light, portable machine running on rails which can be extended to suit the cutting length. It uses oxygen-acetylene or oxygen-LPG. The traveling speed is adjustable enabling cutting through materials up to 100mm thick. Cutting nozzles ANME/ANM and PNME/PNM used on the universal cutting torch, can both be fitted to the machine.

GAS CUTTING

- A light and portable main body manufactured from high-strength aluminium.
- Adjustable speed control.
- Quick-connectors for rapid hose connections.
- Designed for straight line cutting and circle cutting diameters between 20mm and 200mm.
- Designed for a single cutting head.
- Beveling range: IYV (45%).

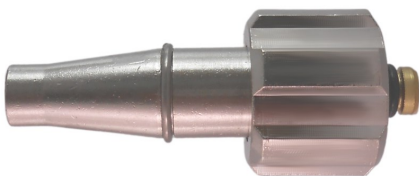
PRODUCT CODE	DESCRIPTION	CUTTING THICKNESS (mm)	CUTTING SPEED (mm/min)	TRACK LENGTH (mm)
CG-130	TAURUS CG1-30 STRAIGHT LINE CUTTER	6 - 100	50 - 750	1800 extendable
	-			
	<u>EXTRA TRACK</u>			
TRACK01	TAURUS TRACK FOR CG1-30-1.8M	-	-	1800 extendable
	-			
	<u>PLASMA TORCH ATTACHMENT</u>			
PCG1-30	TAURUS PLASMA TORCH HOLDER FOR CG1-30	PSU DETERMINED	50 - 4500	

TAURUS MINIPAK TWO-PIECE GAS TORCH



MINIPAK SHANK

Taurus MINIPAK Shanks have 1/4" inlet connections and are used in conjunction with either portable cylinder mixers or cutting attachments. These products are portable and user fatigue is minimised.



MINIPAK MIXER

Taurus MINIPAK Mixers are designed for use in conjunction with portable cylinder torch shanks. DH nozzles suitable for all light-duty gas welding, are used.



MINIPAK CUTTING ATTACHMENT

Taurus MINIPAK Cutting attachments are designed for use in conjunction with portable cylinder torch shanks. AF-N cutting nozzles suitable for all light-duty oxy-acetylene cutting of material up to a thickness of 50mm, are used.

PRODUCT CODE	DESCRIPTION
M0001-MP	TAURUS MINIPAK MIXER
CA001-MP	TAURUS MINIPAK CUTTING ATTACHMENT
SH001-MP	TAURUS MINIPAK SHANK



MINIPAK REGULATORS

Taurus MINIPAK regulators are designed to fit onto portable cylinders with an 11/16" x 20 TPI W female-valve thread. Its function is to reduce high-pressure cylinder gas to a lower level for particular use in all light-duty cutting and welding operations.



MINIPAK FLASHBACK ARRESTORS

Taurus MINIPAK flash arrestors are designed to fit onto portable cylinder regulator outlets of 1/4". Its function is to reduce the risk of gas back feeding which can result in damage to equipment and even fatal explosion of gas cylinders.

PRODUCT CODE	DESCRIPTION
REGULATORS	
MPDAREG	TAURUS MINIPAK REGULATOR-O2-1 STAGE-2G-1/4
MPO2REG	TAURUS MINIPAK REGULATOR-O2-1 STAGE-2G-1/4
FLASHBACK ARRESTORS	
FBAR-MP	TAURUS MP FLASHBACK ARRESTOR-OXY-REG-1/4
FBAL-MP	TAURUS MP FLASHBACK ARRESTOR-ACY-REG-1/4

TAURUS MINIPAK NOZZLES & HOSE FITTINGS



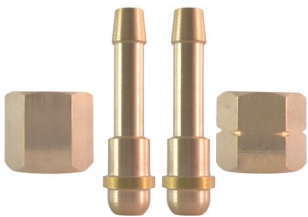
MINIPAK DH BRAZING NOZZLES

Taurus MINIPAK DH brazing nozzles are used with portable cylinder mixers and are suitable for all light-duty gas welding of steel up to 8mm thick.



MINIPAK AF-N CUTTING NOZZLES

Taurus MINIPAK AF-N cutting nozzles are used with portable cylinder cutting attachments and are suitable for all light-duty oxy-acetylene cutting steel up to 50mm thick.



MINIPAK HOSE FITTINGS

Taurus MINIPAK hose fittings are used with portable cylinder gas equipment with a nut thread of 1/4" and tail pieces to fit 6mm gas hose.

PRODUCT CODE	DESCRIPTION
	DH BRAZING NOZZLE
DH1-MP	TAURUS MINIPAK BRAZING NOZZLE 1
DH2-MP	TAURUS MINIPAK BRAZING NOZZLE 2
DH3-MP	TAURUS MINIPAK BRAZING NOZZLE 3
DH5-MP	TAURUS MINIPAK BRAZING NOZZLE 5
DH7-MP	TAURUS MINIPAK BRAZING NOZZLE 7
	AF-N CUTTING NOZZLE
AFN-0.8-MP	TAURUS MINIPAK AFN 0.8 CUTTING NOZZLE
AFN-1.2-MP	TAURUS MINIPAK AFN 1.2 CUTTING NOZZLE
AFN-1.6-MP	TAURUS MINIPAK AFN 1.6 CUTTING NOZZLE
	GAS HOSE FITTINGS
OXYNUT-MP	TAURUS MINIPAK NUT (1/4)-RH-OXYGEN
ACNUT-MP	TAURUS MINIPAK NUT (1/4)-LH-ACETYLENE
TP6MM-MP	TAURUS MINIPAK TAILPIECE-6MM HOSE FOR 1/4

TAURUS MINIPAK COMBINATION KIT



STANDARD KIT CONSISTS OF:

- Toolbox
- DH welding nozzles - No. 1,3 & 7.
- Cutting nozzle AFN- 0.8mm, 1.2mm & 1.6mm
- Minipak acetylene regulator
- Minipak oxygen regulator
- Minipak regulator mounted flashback arrestors
- Minipak torch mounted flashback arrestors
- Minipak shank
- Minipak type 2 cutting attachment
- Minipak type 2 mixer
- 3m gas hose(6mm) set

The TAURUS Minipak combination kit is a starting kit for general brazing, welding and cutting with oxygen and acetylene gas. It can be extended to suit personal and job requirements. The equipment is presented in a secure, robust toolbox. The fittings are compatible with portable size(11/16" x 20 TPI W female-valve thread) gas cylinders in South Africa.

PRODUCT CODE	DESCRIPTION	GAS	PACKAGE	BULK
CK02	TAURUS MINI-PAK C&W KIT	OXY / ACE	1	-



TAURUS SINGLE STAGE REGULATORS - SX MODEL



The primary function of a gas regulator is to reduce high-pressure gas in a cylinder or process line to a lower, more usable level. A regulator is not a flow control device. It is used to control delivery pressure only. It has two gauges, one to measure the inlet pressure and the other to measure the outlet delivery pressure.

APPLICATIONS

- Medium-duty cutting, heating and welding.

FEATURES

- Sufficient flow for cutting up to 300mm steel.
- Smooth, high precision adjustment.
- Side inlet connection.
- Standard chromed gauges and brass body.

REGULATOR	INLET			OUTLET			
	MAXIMUM PRESSURE	PRESSURE GAUGE	CONNECTION	DELIVERY PRESSURE	PRESSURE GAUGE	MAXIMUM GAS FLOW	CONNECTION
OXYGEN 3/8"	23000 kPa	0 - 28000 kPa	G 5/8" B-rh	0 - 1000 kPa	0 - 1100 kPa	155 m³/h	3/8" rh
ACETYLENE 3/8"	2500 kPa	0 - 2750 kPa	G 5/8" B-lh	0 - 150 kPa	0 - 255 kPa	30 m³/h	3/8" lh
LPG 3/8"	2500 kPa	0 - 2750 kPa	G 5/8" B-lh	0 - 150 kPa	0 - 255 kPa	30 m³/h	3/8" lh
NITROGEN 3/8"	23000 kPa	0 - 28000 kPa	G 3/4" B-rh	0 - 800 kPa	0 - 1100 kPa	30 m³/h	3/8" rh
OXYGEN 9/16"	23000 kPa	0 - 28000 kPa	G 5/8" B-rh	0 - 1000 kPa	0 - 1100 kPa	155 m³/h	9/16" rh
ACETYLENE 9/16"	2500 kPa	0 - 2750 kPa	G 5/8" B-lh	0 - 150 kPa	0 - 255 kPa	30 m³/h	9/16" lh

PRODUCT CODE	DESCRIPTION	GAS	PACKAGE	BULK
O2REG	TAURUS REGULATOR-OXY-1 STAGE-2G	OXYGEN	1	12
DAREG	TAURUS REGULATOR-ACY-1 STAGE-2G	ACETYLENE	1	12
LPGREG	TAURUS REGULATOR-LPG-1 STAGE-2G	LPG	1	12
N2REG	TAURUS REGULATOR-NIT-1 STAGE-2G	NITROGEN	1	12
HSO2REG	TAURUS REGULATOR-OXY-1 STAGE-2G-9/16	OXYGEN	1	12
HSDAREG	TAURUS REGULATOR-ACY-1 STAGE-2G-9/16	ACETYLENE	1	12

TAURUS SINGLE STAGE LPG HEATING REGULATOR



The primary function of a gas regulator is to reduce high-pressure gas in a cylinder or process line to a lower, more usable level. A regulator is not a flow control device. It is used to control delivery pressure only.

APPLICATIONS

- Light duty cutting and heating.

FEATURES

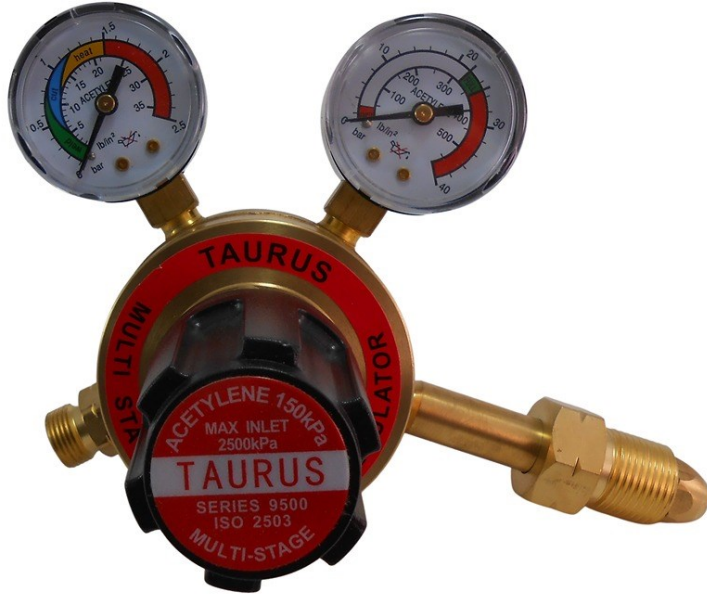
- Maximum inlet pressure of 2500 kPa.
- Body and cap forged class A brass for maximum strength with a chromed gauge.
- Smooth, high precision adjustment.
- Side-inlet connection.
- Standard version with chromed gauges, brass body and bonnet.

INLET	VALUE
Maximum inlet pressure	2500 kPa
Inlet Connection	G 5/8" B-lh
Supply pressure gauge	0 - 2750 kPa

OUTLET	VALUE
Delivery pressure	0 - 600 kPa
Delivery pressure gauge	0 - 600 kPa
Outlet connection	3/8" lh

PRODUCT CODE	DESCRIPTION	GAS	PACKAGE (UNIT)	BULK (UNIT)
LPGREG-1G-H	TAURUS LPG REGULATOR - 1GAUGE - HEATING	LPG	1	12
OTHER SINGLE STAGE REGULATORS				
O2REG	TAURUS REGULATOR-OXY-1 STAGE-2G	OXYGEN	1	12
DAREG	TAURUS REGULATOR-ACY-1 STAGE-2G	ACETYLENE	1	12
LPGREG	TAURUS REGULATOR-LPG-1 STAGE-2G	LPG	1	12
N2REG	TAURUS REGULATOR-NIT-1 STAGE-2G	NITROGEN	1	12

TAURUS DOUBLE STAGE REGULATORS - MX MODEL



The Taurus double-stage regulator is designed to lower the high pressure gas from a gas cylinder to a usable outlet pressure in two stages. It requires less readjustment and provides a more constant delivery pressure despite changes in inlet pressure. It is exceptionally well suited for high-pressure cylinder applications and where stable outlet pressure is important. The regulator is fitted with two gauges, one to measure the inlet pressure and the other for measuring the outlet delivery pressure.

APPLICATIONS

- Ideal where stable outlet pressure is important.
- Used for purging (Nitrogen), quality cutting applications and systems or precision machine cutting. Suitable for heavy machine cutting, hand cutting and gouging.

FEATURES

- Forged brass body for maximum strength.
- First stage reduces full cylinder pressure by approximately 90%.
- Large Ø 70 mm second stage diaphragm accurately controls delivery pressure.
- Durable brass bonnet.

REGULATOR	INLET			OUTLET			
	MAXIMUM PRESSURE	PRESSURE GAUGE	CONNECTION	DELIVERY PRESSURE	PRESSURE GAUGE	MAXIMUM GAS FLOW	CONNECTION
OXYGEN	23000 KPa	0 - 42000 Kpa	G 5/8" B-RH	0 - 1000KPa	0 - 1600 Kpa	100 m³/h	3/8" RH
ACETYLENE	2500 KPa	0 - 4000 Kpa	G 5/8" B-LH	0 - 150KPa	0 - 250 Kpa	25 m³/h	3/8" LH
NITROGEN	30000 KPa	0 - 42000 Kpa	G 3/4" B-RH	0 - 1000KPa	0 - 1600 Kpa	100 m³/h	3/8" RH

PRODUCT CODE	DESCRIPTION	GAS	PACKAGE	BULK
DS/02REG	TAURUS REGULATOR-OXY-2 STAGE-2G	OXYGEN	1	12
DS/DAREG	TAURUS REGULATOR-ACY-2 STAGE-2G	ACETYLENE	1	12
DS/N2REGHP	TAURUS REGULATOR-N2-2S/2G-HP-3/8	NITROGEN	1	12



TAR1SFM & TARG1-CFM ARGON FLOWMETER

The TAR1SFM and TARG1-CFM Taurus argon flowmeter connects to an argon gas cylinder. Its function is to measure the amount of gas passing through. It is generally used in TIG and MIG welding. The adjustment knob adjusts the flowrate and not the pressure. The flowrate is set in litres per minute. The gauge measures the inlet pressure and the tube measures the delivery flowrate.

TARG1-HDFM HEAVY DUTY ARGON FLOWMETER

The TARG1-HDFM Taurus heavy duty flowmeter is manufactured from heavy duty brass which connects to an argon gas cylinder. Its function is to measure the amount of gas passing through. It is generally used in TIG and MIG welding. The adjustment knob accurately controls the flowrate but not the pressure.. The flowrate is set in litres per minute. The gauge measures the inlet pressure and the tube measures the delivery flowrate.

CO₂ HEATED FLOWMETER

The Taurus CO₂ heated flow meter connects to a gas cylinder. Its primary function is to heat the MIG gas mixture containing carbon dioxide and prevent it from freezing. The flowrate is measured in liters per minute and can be adjusted. The inlet pressure is indicated on the gauge.

SPECIFICATION	TARG1-CFM ARGON FLOWMETER	TARG1-HDFM & TARG1-SFM ARGON FLOWMETER	HEATED CO ₂ FLOWMETER
Gas	Argon	Argon	Carbon Dioxide
Maximum inlet pressure	23000 KPa	23000 KPa	23000 KPa
Inlet Connection	G 5/8" B-RH	G 5/8" B-RH	BS341 - RH
Supply pressure gauge	0 - 31500 KPa	0 - 31500 KPa	0 - 31500 KPa
Flow	0 - 30 Lpm	0 - 30 Lpm	0 - 30 Lpm
Outlet connection	-	3/8" RH	3/8" RH
Heated	No	No	Yes

PRODUCT CODE	DESCRIPTION	GAS	PACKAGE	BULK
ARGFLCR	FLOWMETER CHROME-MODEL TARG1-CFM	ARGON	1	12
ARGFLBR-HD	TAURUS FLOWMETER HEAVY DUTY CHROMED-MODEL TARG1-HDFM	ARGON	1	12
ARGFLSTD	TAURUS FLOWMETER CHROMED BRASS BODY-MODEL TARG1-SFM	ARGON	1	12
ARGFLM.H	TAURUS FLOWMETER-CO ₂ -1 STAGE-HEATED	CARBON DIOXIDE	1	12

TAURUS FLOWMETER DOUBLE OUTLET



The TAURUS FLOWMETER DOUBLE OUTLET ARGON TARG1-DOFM connects to an argon gas cylinder. It's a single cylinder inlet with a dual outlet flowmeter. Its function is to individually adjust each outlet and measure the amount of gas passing through separately. It is generally used in TIG and MIG welding. The adjustment knob adjusts the flowrate and not the pressure. The flowrate is set in litres per minute. The gauge measures the inlet pressure and each tube measures the delivery flowrate.

APPLICATIONS

- Suitable for all MIG/TIG welding applications

FEATURES

- Maximum inlet pressure of 23 000 Kpa.
- Designed for use with argon based gases.
- Two individual adjustable outlet.

SPECIFICATION	TARG1-DOFM ARGON FLOWMETER
Gas	Argon
Maximum inlet pressure	23000 kPa
Inlet Connection	G 5/8" B-rh
Supply pressure gauge	0 - 31500 kPa
Flow outlet 1	0 - 30 lpm
Flow outlet 2	0 - 30 lpm
Outlet connection	3/8" rh

PRODUCT CODE	DESCRIPTION	GAS	PACKAGE	BULK
ARGFLDO	TAURUS FLOWMETER DOUBLE OUTLET ARGON TARG1-DOFM	ARGON	1	12

TAURUS ONE PIECE CUTTING TORCH



UNIVERSAL CUTTING TORCH

The Taurus universal 500mm long cutting torch is a heavy-duty, versatile and robust Saffire style torch with a 90 degree angled head. It can cut through steel up to 300mm thick and ANM, ANME, PNM or PNME nozzles can be fitted. Preheated oxygen and fuel gas mixed in the nozzle ensure greater safety and higher back-fire resistance.



62-3F CUTTING TORCH

The Taurus 62-3F 500mm long heavy-duty versatile and robust cutting torch has a 90 degree angled head. Flat base Taurus NX nozzles must be fitted. The torch can cut through steel up to 300mm thick. Only oxygen and LPG or propane gas can be used.



MOD28 CUTTING TORCH

The Taurus MOD28 a 500mm heavy-duty, versatile and robust cutting torch has a 90 degree angled head. Taurus 2890-F or 2890-P threaded nozzles must be fitted. The torch can cut through steel up to 300mm thick. Oxygen and acetylene or oxygen and LPG or propane gas can be used.

DESCRIPTION	UNIVERSAL CUTTING TORCH	62-3F CUTTING TORCH	MOD28 CUTTING TORCH
Torch length	500mm	500mm	500mm
Head	90 °	90 °	90 °
Inlet connection	3 / 8" BSP	3 / 8" BSP	9 / 16"
Gas	OXY - ACE - LPG	OXY - LPG	OXY - ACE - LPG
Steel cutting capacity	up to 300mm	up to 300mm	up to 300mm
Supported nozzles	8290 ANM + ANME PNM + PNME	6290 NX	2890 - F 2890 - P

PRODUCT CODE	DESCRIPTION	GAS	PACKAGE (UNIT)	BULK (UNIT)
CTT-STD	UNIVERSAL CUTTING TORCH STD - 3/8	OXY / ACE / LPG	1	10
CTT-HD	TAURUS UNIVERSAL CUTTING TORCH HD - 3/8	OXY / ACE / LPG	1	10
CTT-62-3F	TAURUS 62-3F CUTTING TORCH - 3/8	OXY / LPG	1	10
CTT-MOD28	TAURUS MOD28 CUTTING TORCH - 9/16	OXY / ACE / LPG	1	10

TAURUS TYPE 2 TORCH



TYPE 2 UNIVERSAL SHANK

The Taurus Type 2 universal shank can only be used in conjunction with either the TYPE 2 cutting attachment, the TYPE 2 mixer or the TYPE 2 high capacity mixer and the selection depends on the task at hand. It has a steel cutting capacity of up to 150mm thick and oxygen, acetylene and LP gases are supported. The inlet connections are 3/8" BSP.

TYPE 2 UNIVERSAL MIXER

The application of the TYPE 2 UNIVERSAL MIXER is for gas welding/brazing and for heating. It requires to be fitted to the Taurus UNIVERSAL SHANK and uses MK2 swaged brazing nozzles. Oxygen and acetylene or oxygen and LP gases are supported.

TYPE 2 HIGH CAPACITY MIXER

The application of the TYPE 2 HIGH CAPACITY MIXER which requires to be fitted to the TAURUS UNIVERSAL SHANK. It uses a neck tube and HN nozzles for heating material with oxygen-LPG.

TYPE 2 CUTTING ATTACHMENT

The application of the TYPE 2 CUTTING ATTACHMENT is for steel cutting using oxygen-acetylene or oxygen-LPG. It requires to be fitted to the TAURUS UNIVERSAL SHANK and uses ANM, ANME, PNM or PNME nozzles. It is manufactured with a forged brass head and stainless steel tubes and steel can be cut with a thickness up to 75mm.

PRODUCT CODE	DESCRIPTION	GAS	PACKAGE	BULK
SH001	TAURUS UNIVERSAL SHANK	OXY / ACE / LPG	1	12
M0002	TAURUS UNIVERSAL MIXER	OXY / ACE / LPG	1	12
M0003	TAURUS HIGH CAPACITY MIXER	OXY / LPG	1	12
CA003	TAURUS UNIVERSAL CUTTING ATTACHMENT	OXY / ACE / LPG	1	12

TAURUS MICRO BRAZING TORCH



The TAURUS MICRO BRAZING TORCH is designed for precision joining of various metals. It is ideally suited for manufacturing and repairing jewelry and electronic products, for hobby making, craft work, sculpturing and glass blowing. The torch is precision engineered, manufactured from quality light materials for easy maneuverability. The tailpieces are 3/8" threaded left handed (red colour coded) for the fuel-gas connection and right handed (blue colour coded) for the oxygen connection.

FEATURES

- Versatile, robust and easy maneuverable.
- All nozzle sizes can be used with acetylene. Nozzle sizes 3, 4 and 5 must be used with LPG.
- Flexible colour coded hoses.
- Five tip sizes for various flame lengths and heat output.

PRODUCT CODE	DESCRIPTION	GAS	PACKAGE (UNIT)	BULK (UNIT)
1C05-0016	JEWELLERS LIGHTWEIGHT BRAZING TORCH	OXY / ACE / LPG	1	12

TAURUS QUICK RELEASE COUPLINGS



TAURUS QUICK RELEASE COUPLINGS are precision engineered and manufactured from high-quality brass ensuring wear resistance, sturdiness, durability, stability and gas escape prevention. They feature nozzle coupling connectors with easy-to-use slider collars for time-saving, fast engagement and disengagement of the gas hoses from the torch or regulator side.

The nozzle coupling connector is easy to use. All you have to do is slide the collar back and insert the male accessory coupling, and then slide the collar completely back to lock it in place.

PRODUCT CODE	DESCRIPTION	CONNECTION THREAD	HOSE SIZE	COLOUR CODING
QC-HD188L-3/8	TAURUS QUICK RELEASE FBA - ACY TORCH 3/8	3/8" lh	8mm	RED
QC-HD188R-3/8	TAURUS QUICK RELEASE FBA - OXY TORCH 3/8	3/8" rh	8mm	BLUE
QC-HD288L-3/8	TAURUS QUICK RELEASE FBA - ACY REG 3/8	3/8" lh	8mm	RED
QC-HD288R-3/8	TAURUS QUICK RELEASE FBA - OXY REG 3/8	3/8" rh	8mm	BLUE

TAURUS FLASHBACK ARRESTORS



A flashback is defined as a flame traveling almost instantaneously in the opposite direction to the normal gas-flow. A flashback incident can cause irreparable damage to equipment and can, in a worst case scenario, be catastrophic if the flash enters the gas cylinder resulting in an explosion. Back-feeding of gas flames can be a result of various incidents of which incorrect closing-down of equipment, pressure drop, incorrect igniting procedure and excessive pressure to name but a few. Flashback arrestors are safety-enhancing items which ensure gas-flow in one direction only. Any brazing, heating, gas welding or cutting operation should not be done without flashback arrestors being fitted to both regulators and torch.

HEAVY DUTY FLASHBACK ARRESTORS

TAURUS heavy-duty flashback arrestors are precision engineered and are robust items manufactured from high-quality material. They are indispensable safety enhancers under demanding conditions.

PRODUCT CODE	DESCRIPTION	INLET / OUTLET CONNECTION	GAS	MOUNTED
FA188L	TAURUS FLASHBACK ARRESTOR-ACY-TORCH-3/8	3/8" lh	ACE / LPG / H2	TORCH
FA188R	TAURUS FLASHBACK ARRESTOR-OXY-TORCH-3/8	3/8" rh	OXYGEN	TORCH
FA288L	TAURUS FLASHBACK ARRESTOR-ACY-REG-3/8	3/8" lh	ACE / LPG / H2	REGULATOR
FA288R	TAURUS FLASHBACK ARRESTOR-OXY-REG-3/8	3/8" rh	OXYGEN	REGULATOR
FAH188L	TAURUS FLASHBACK ARRESTOR-ACY-TORCH-9/16	9/16" lh	ACE / LPG / H2	TORCH
FAH188R	TAURUS FLASHBACK ARRESTOR-OXY-TORCH-9/16	9/16" rh	OXYGEN	TORCH
FAH288L	TAURUS FLASHBACK ARRESTOR-ACY-REG-9/16	9/16" lh	ACE / LPG / H2	REGULATOR
FAH288R	TAURUS FLASHBACK ARRESTOR-OXY-REG-9/16	9/16" rh	OXYGEN	REGULATOR
HEAVY DUTY FLASHBACK ARRESTORS				
HD188L	TAURUS FLASHBACK ARRESTOR-ACY-TORCH-3/8	3/8" lh	ACE / LPG / H2	TORCH
HD188R	TAURUS FLASHBACK ARRESTOR-OXY-TORCH-3/8	3/8" rh	OXYGEN	TORCH
HD288L	TAURUS FLASHBACK ARRESTOR-ACY-REG-3/8	3/8" lh	ACE / LPG / H2	REGULATOR
HD288R	TAURUS FLASHBACK ARRESTOR-OXY-REG-3/8	3/8" rh	OXYGEN	REGULATOR

TAURUS GAS COMBINATION KIT



The TAURUS combination kit is a starting kit for general brazing, welding and cutting with oxygen and acetylene gas. It can be extended to suit personal and job requirements. The equipment is presented in a secure, robust toolbox. The inlet fittings on the regulators are G 5/8" - B-rh on the oxygen side and B-lh on the acetylene side. The fittings are compatible with industrial size gas cylinders in South Africa.

STANDARD KIT CONSISTS OF:	
• Toolbox	• Type 2 cutting attachment
• MK2 welding nozzles - No. 3,5 & 7.	• Type 2 mixer
• Cutting nozzle ANM - 0,8 mm	• Nozzle cleaner
• Acetylene regulator	• Triple flint lighter
• Oxygen regulator	• Fitted hose set
• Torch mounted flashback arrestors	• Goggles
• Type 2 shank	

PRODUCT CODE	DESCRIPTION	GAS	PACKAGE (UNIT)	BULK (UNIT)
CK01	TAURUS CUTTING & WELDING KIT	OXY / ACE	1	2



The TAURUS heating torch is suitable for various applications such as heating a work piece before welding, bending, soldering, brazing as well as for roofing. The specially designed burner ensures a powerful, windproof flame for outdoor work. The burner and neck tube are available in different sizes to cater for various applications and requirements. The burner requires high pressure gas for its operation and a high pressure regulator is also a requirement.



TAURUS LPG HEATING TORCH HANDLE AND NECK



TORCH HANDLE WITHOUT ECONOMISER

The single-valve torch is designed for a secure hand fit and smaller burners are usually fitted. The main flame will be enabled on ignition since the torch handle is not fitted with a pilot flame device or trigger.



TORCH HANDLE WITH ECONOMISER

The double-valve handle is designed for a secure hand fit and larger burners are normally fitted. An adjustable economiser valve enables a gas-saving pilot flame. Once the trigger is depressed, the pilot flame instantly shifts to the main flame or to a pulsating main flame. The economiser valve saves both time and gas, especially when working over extended periods with frequent breaks.



TORCH HANDLE NECK TUBES

Neck tubes are precision engineered and produced from high-quality brass. Several lengths are available for various applications and requirements.

PRODUCT CODE	DESCRIPTION	ECONOMISER	INLET CONNECTION	LENGTH
TORCH HANDLES				
LPG-TH001	TAURUS LPG TORCH HANDLE - NO ECONOMISER	NO	3 / 8" lh	-
LPG-TH002	TAURUS LPG TORCH HANDLE WITH ECONOMISER	YES	3 / 8" lh	-
TORCH HANDLE NECK TUBES				
LPG-NT-70MM	TAURUS LPG NECK TUBE - 70MM	-	-	70mm
LPG-NT-180MM	TAURUS LPG NECK TUBE - 180MM	-	-	180mm
LPG-NT-750MM	TAURUS LPG NECK TUBE - 750MM	-	-	750mm



STANDARD BURNERS 19MM - 25MM

Standard burners for brush-type flames are available for various kinds of soft soldering and for small heating applications. The recommended working pressure is 2 bar.

POWER BURNERS 32MM - 42MM

Power burners are precision engineered and manufactured from heavy-duty, high-quality brass designed for extremely strong flames and to withstand high winds and the severest weather conditions. It is ideal for drying work pieces, preheating welding pieces, bitumen laying, detail and field torching, melting snow/ice and other demanding applications requiring a heat source. The recommended working pressure is 4 bar.

PRODUCT CODE	DESCRIPTION	BURNER DIAMETER	GAS CONSUMPTION AT 4 BAR	EFFECT
	STANDARD BURNER			
LPG-B-19MM	TAURUS LPG BURNER - 19MM	19mm	240 g/h	3.1 kW
LPG-B-25MM	TAURUS LPG BURNER - 25MM	25mm	240 g/h	3.1 kW
	POWER BURNER			
LPG-B-29MM	TAURUS LPG BURNER - 29MM	29mm	2000 g/h	26 kW
LPG-B-32MM	TAURUS LPG BURNER - 32MM	32mm	3350 g/h	43.5 kW
LPG-B-42MM	TAURUS LPG BURNER - 42MM	42mm	6700 g/h	86 kW

TAURUS OXY-LPG HEATING TUBE AND NOZZLES



STAINLESS STEEL NECK TUBE

TAURUS stainless steel neck tubes fit onto the TYPE 2 HIGH CAPACITY MIXER and accommodate the HN series of heavy-duty heating nozzles.



2290-HN HEATING NOZZLE

TAURUS 2290-HN heating nozzles are designed for efficient, heavy-duty heating and its flames are ideal for metal-heating prior to welding or bending. The precision engineered and manufactured nozzles are designed to reduce the occurrence of flashbacks. Oxygen and LP/propane gas must be used.

PRODUCT CODE	DESCRIPTION	GAS	PACKAGE (UNIT)	BULK (UNIT)
SSNT-1000MM	NECK TUBE EXTENTION TAURUS S/S NECK TUBE - 1000MM	OXY / LPG	1	1
HN2	2290-HN HEATING NOZZLE TAURUS HN2 HEATING NOZZLE	OXY / LPG	1	1
HN3	TAURUS HN3 HEATING NOZZLE	OXY / LPG	1	1
HN4	TAURUS HN4 HEATING NOZZLE	OXY / LPG	1	1
HN5	TAURUS HN5 HEATING NOZZLE	OXY / LPG	1	1

TAURUS ANM AND ANME 8290 CUTTING NOZZLES



These nozzles utilise the nozzle-mix principle whereby the fuel gas and preheated oxygen are kept separate right up to the nozzle and are only mixed once inside the the nozzle preheat orifices. The nozzle mixing process ensures that the volume of mixed gas is kept to the absolute minimum and thereby reduces the occurrence of a flashback. Nozzles are manufactured from copper for good heat dissipation and can be cleaned with a fine file. Orifices are cleaned using appropriate cleaners. The shape of the flame as well as the nozzle performance depend on sharp, square orifice edges.

TAURUS ANM and ANME CUTTING NOZZLES are three-seat nozzles and oxygen and acetylene are used. They are fitted onto the TAU-RUS UNIVERSAL CUTTING TORCH,TAURUS TYPE 2 CUTTING AT-TACHMENT or the TAU-RUS STRAIGHT LINE CUTTER. These nozzles are presented in seven sizes and can cut material up to 300mm thick. ANME cutting nozzles are usually applied in automated cutting processes such as profile or straight line cutting. ANM cutting nozzles are usually applied when using handheld torches.

PRODUCT CODE	DESCRIPTION	NOZZLE SIZE	MATERIAL THICKNESS (mm)	CUTTING SPEED (mm/min)	OXYGEN PRESSURE (kPa)	ACETYLENE PRESSURE (kPa)
ANM0.8	TAURUS ANM 0.8 CUTTING NOZZLE 1/32	0.8	3 - 6	500 - 850	150	15
ANM1.2	TAURUS ANM 1.2 CUTTING NOZZLE 3/64	1.2	6 - 12	440 - 700	200	15
ANM1.6	TAURUS ANM 1.6 CUTTING NOZZLE 1/16	1.6	12 - 75	300 - 610	250	15
ANM2.0	TAURUS ANM 2.0 CUTTING NOZZLE 5/64	2.0	75 - 100	180 - 250	300	30
ANM2.4	TAURUS ANM 2.4 CUTTING NOZZLE 3/32	2.4	100 - 150	150 - 180	300	30
ANM2.8	TAURUS ANM 2.8 CUTTING NOZZLE 7/64	2.8	150 - 250	100 - 250	450	35
ANM3.2	TAURUS ANM 3.2 CUTTING NOZZLE 1/8	3.2	250 - 300	90 - 125	550	35

PRODUCT CODE	DESCRIPTION	NOZZLE SIZE	MATERIAL THICKNESS	CUTTING SPEED (mm/min)	OXYGEN PRESSURE (kPa)	ACETYLENE PRESSURE (kPa)
ANME0.8	TAURUS ANME 0.8 CUTTING NOZZLE 1/32	0.8	3 - 6	620	150	15
ANME1.2	TAURUS ANME 1.2 CUTTING NOZZLE 3/64	1.2	6 - 12	530	200	15
ANME1.6	TAURUS ANME 1.6 CUTTING NOZZLE 1/16	1.6	12 - 75	170	350	30
ANME2.0	TAURUS ANME 2.0 CUTTING NOZZLE 5/64	2.0	75 - 100	155	350	30
ANME2.4	TAURUS ANME 2.4 CUTTING NOZZLE 3/32	2.4	100 - 150	140	400	30
ANME2.8	TAURUS ANME 2.8 CUTTING NOZZLE 7/64	2.8	150 - 250	100	560	35
ANME3.2	TAURUS ANME 3.2 CUTTING NOZZLE 1/8	3.2	250 - 300	90	560	35

TAURUS PNM AND PNME 8290 CUTTING NOZZLES



These nozzles utilise the nozzle-mix principle whereby the fuel gas and preheated oxygen are kept separate right up to the nozzle and are only mixed once inside the the nozzle preheat orifices. The nozzle mixing process ensures that the volume of mixed gas is kept to the absolute minimum and thereby reduces the occurrence of a flashback. Nozzles are manufactured from copper for good heat dissipation and can be cleaned with a fine file. Orifices are cleaned using appropriate cleaners. The shape of the flame as well as the nozzle performance depend on sharp, square orifice edges.

TAURUS PNM and PNME CUTTING NOZZLES are three-seat nozzles and oxygen and acetylene are used. They are fitted onto the TAURUS UNIVERSAL CUTTING TORCH, TAURUS TYPE 2 CUTTING ATTACHMENT or the STRAIGHT LINE CUTTER. These nozzles are presented in seven sizes and can cut material up to 300mm thick. PNME cutting nozzles are usually applied in automated cutting processes such as profile or straight line cutting. PNM cutting nozzles are usually applied when using handheld torches.

PRODUCT CODE	DESCRIPTION	NOZZLE SIZE	MATERIAL THICKNESS (mm)	CUTTING SPEED (mm/min)	OXYGEN PRESSURE (kPa)	ACETYLENE PRESSURE (kPa)
PNM0.8	TAURUS PNM 0.8 CUTTING NOZZLE 1/32	0.8	3 - 6	460	150	20
PNM1.2	TAURUS PNM 1.2 CUTTING NOZZLE 3/64	1.2	6 - 12	400	200	20
PNM1.6	TAURUS PNM 1.6 CUTTING NOZZLE 1/16	1.6	12 - 75	160	350	35
PNM2.0	TAURUS PNM 2.0 CUTTING NOZZLE 5/64	2.0	75 - 100	155	350	40
PNM2.4	TAURUS PNM 2.4 CUTTING NOZZLE 3/32	2.4	100 - 150	140	400	40
PNM2.8	TAURUS PNM 2.8 CUTTING NOZZLE 7/64	2.8	150 - 250	100	560	50
PNM3.2	TAURUS PNM 3.2 CUTTING NOZZLE 1/8	3.2	250 - 300	90	560	60

PRODUCT CODE	DESCRIPTION	NOZZLE SIZE	MATERIAL THICKNESS	CUTTING SPEED (mm/min)	OXYGEN PRESSURE (kPa)	ACETYLENE PRESSURE (kPa)
PNME0.8	TAURUS PNME 0.8 CUTTING NOZZLE 1/32	0.8	3 - 6	460	150	20
PNME1.2	TAURUS PNME 1.2 CUTTING NOZZLE 3/64	1.2	6 - 12	400	200	20
PNME1.6	TAURUS PNME 1.6 CUTTING NOZZLE 1/16	1.6	12 - 75	160	350	35
PNME2.0	TAURUS PNME 2.0 CUTTING NOZZLE 5/64	2.0	75 - 100	155	350	40
PNME2.4	TAURUS PNME 2.4 CUTTING NOZZLE 3/32	2.4	100 - 150	140	400	40
PNME2.8	TAURUS PNME 2.8 CUTTING NOZZLE 7/64	2.8	150 - 250	100	560	50
PNME3.2	TAURUS PNME 3.2 CUTTING NOZZLE 1/8	3.2	250 - 300	90	560	60

TAURUS 2890 CUTTING NOZZLES



TIP MIX TIPS 2890-F – ACETYLENE FUEL GAS (F SERIES)

Taurus 2890-F series are screw-type cutting nozzles for use with oxygen and acetylene. They are available in seven sizes and, depending on the nozzle size and gas equipment can cut metal up to 200mm thick. These nozzles are compatible with the TAURUS MOD 28 cutting torch.



TIP MIX TIPS 2890-P – LPG FUEL GAS (P SERIES)

Taurus 2890-P series are screw-type cutting nozzles for use with oxygen and LPG. They are available in four sizes and, depending on the nozzle size and gas equipment can cut metal up to 75mm thick. These nozzles are compatible with the TAURUS MOD 28 cutting torch.

PRODUCT CODE	DESCRIPTION	MATERIAL THICKNESS (mm)	OXYGEN PRESSURE (kPa)	ACETYLENE PRESSURE (kPa)
H0F	TAURUS 0F CUTTING NOZZLE	3 - 6	70 - 100	14
H1F	TAURUS 1F CUTTING NOZZLE	0 - 10	100 - 150	20
H2F	TAURUS 2F CUTTING NOZZLE	10 - 50	150 - 250	30
H3F	TAURUS 3F CUTTING NOZZLE	50 - 100	300 - 450	50
H4F	TAURUS 4F CUTTING NOZZLE	100 - 125	500 - 550	70
H5F	TAURUS 5F CUTTING NOZZLE	125 - 150	550 - 600	70
H6F	TAURUS 6F CUTTING NOZZLE	150 - 200	600 to 650	70

PRODUCT CODE	DESCRIPTION	MATERIAL THICKNESS (mm)	OXYGEN PRESSURE (kPa)	ACETYLENE PRESSURE (kPa)
2890-0P	TAURUS CUTTING NOZZLE 2890-0P	0 - 10	150 - 200	20
2890-1P	TAURUS CUTTING NOZZLE 2890-1P	10 - 25	200 - 250	40
2890-2P	TAURUS CUTTING NOZZLE 2890-2P	25 - 50	200 - 300	40
2890-3P	TAURUS CUTTING NOZZLE 2890-3P	50 - 75	250 - 300	40

TAURUS 6290 CUTTING NOZZLES



6290-NX – LPG FUEL GAS (NX SERIES)

TAURUS NX nozzles are flat based, use oxygen and LPG and fit onto the TAURUS 62-3F cutting torches. Six sizes are available and depending on the nozzle size and gas equipment can cut metal up to 300mm thick.



6290-AC – ACETYLENE GAS (AC SERIES)

TAURUS AC nozzles are flat based, use oxygen and acetylene gas and fit onto the TAURUS 62-3F cutting torches. Six sizes are available and depending on the size and gas equipment, metal up to 300mm thick can be cut.

PRODUCT CODE	DESCRIPTION	MATERIAL THICKNESS (mm)	OXYGEN PRESSURE (kPa)	LPG LOW PRESSURE (kPa)
NX0	TAURUS LPG NX 0 CUTTING NOZZLE-6290	10 - 15	200 - 300	1.5 - 20
NX1	TAURUS LPG NX 1 CUTTING NOZZLE-6290	15 - 25	250 - 350	1.5 - 20
NX2	TAURUS LPG NX 2 CUTTING NOZZLE-6290	25 - 50	300 - 400	1.5 - 20
NX3	TAURUS LPG NX 3 CUTTING NOZZLE-6290	50 - 75	300 - 450	1.5 - 20
NX4	TAURUS LPG NX 4 CUTTING NOZZLE-6290	75 - 150	350 - 550	1.5 - 20
NX5	TAURUS LPG NX 5 CUTTING NOZZLE-6290	150 - 200	450 - 550	1.5 - 20
NX6	TAURUS LPG NX 6 CUTTING NOZZLE-6290	200 - 300	500 - 650	1.5 - 20

PRODUCT CODE	DESCRIPTION	MATERIAL THICKNESS (mm)	OXYGEN PRESSURE (kPa)	ACETYLENE LOW PRESSURE (kPa)
AC-1	TAURUS AC-1 CUTTING NOZZLE-6290	15 - 25	200 - 350	1.5 - 20
AC-2	TAURUS AC-2 CUTTING NOZZLE-6290	25 - 50	300 - 450	1.5 - 20
AC-3	TAURUS AC-3 CUTTING NOZZLE-6290	50 - 100	300 - 450	1.5 - 20
AC-4	TAURUS AC-4 CUTTING NOZZLE-6290	100 - 175	350 - 550	1.5 - 20
AC-5	TAURUS AC-5 CUTTING NOZZLE-6290	175 - 250	450 - 550	1.5 - 20
AC-6	TAURUS AC-6 CUTTING NOZZLE-6290	250 - 300	500 - 650	1.5 - 20



BRAZING/WELDING NOZZLES

TAURUS brazing nozzles are used for welding and brazing with oxygen and acetylene. For safety the correct size nozzle must be used.

MK SERIES NOZZLES

TAURUS MK SERIES NOZZLES are available in 6 sizes. They are used for welding and brazing and are connected to a TYPE 2 MIXER AND SHANK.

DH SERIES NOZZLES (MINIPAK)

TAURUS DH SERIES NOZZLES are available in 5 sizes. They are used for welding and brazing and are connected to a light-weight MINI-PAK shank.

PRODUCT CODE	DESCRIPTION	MATERIAL THICKNESS (mm)	OXYGEN PRESSURE (kPa)	LPG LOW PRESSURE (kPa)
DH1-MP	TAURUS MINIPAK BRAZING NOZZLE 1	0.9	15	15
DH2-MP	TAURUS MINIPAK BRAZING NOZZLE 2	1.2	15	15
DH3-MP	TAURUS MINIPAK BRAZING NOZZLE 3	2.0	15	15
DH5-MP	TAURUS MINIPAK BRAZING NOZZLE 5	2.6	15	15
DH7-MP	TAURUS MINIPAK BRAZING NOZZLE 7	3.2	15	15

PRODUCT CODE	DESCRIPTION	MATERIAL THICKNESS	OXYGEN PRESSURE (kPa)	ACETYLENE LOW PRESSURE (kPa)
MK2-1	TAURUS BRAZING NOZZLE MK2 SWAGED 1	0.9	15	15
MK2-2	TAURUS BRAZING NOZZLE MK2 SWAGED 2	1.2	15	15
MK2-3	TAURUS BRAZING NOZZLE MK2 SWAGED 3	2.0	15	15
MK2-5	TAURUS BRAZING NOZZLE MK2 SWAGED 5	2.6	15	15
MK2-7	TAURUS BRAZING NOZZLE MK2 SWAGED 7	3.2	15	15
MK2-10	TAURUS BRAZING NOZZLE MK2 SWAGED 10	4.0	20	20



Gas hoses are transporting agents for various gases from a regulated gas source to gas equipment. TAURUS gas hoses are high-quality items with a flame retardant, polyester yarn reinforced EPDM outer cover resistant to welding sparks and flames. It is weatherproof, can be used indoors as well as outdoors and will support pressures up to 20 bar. The inner black rubber lining for oxygen and acetylene gas is manufactured from the SBR compound whilst that for LPG is from the NBR compound. TAURUS gas hoses can be used safely for cutting, welding, brazing and heating applications.

OXYGEN / ACETYLENE / LPG HOSE SPECIFICATION (BS EN ISO 3821)

DESCRIPTION	VALUE
Hose internal diameter	8 mm
Rating	Normal duty
Maximum operating pressure	2 MPa
Proof pressure	4 MPa
Maximum burst pressure	6 MPa

DESCRIPTION	VALUE
Working temperature range	-30°C to +60°C
Tube material (LPG)	NBR
Tube material (oxygen / acetylene)	SBR
Cover material	EPDM
Hose reinforcement	Polyester textile yarn

PRODUCT CODE	DESCRIPTION	HOSE SIZE	INNER HOSE DIAMETER	GAS	PRESSURE
8MM HOSE					
GW90150	TAURUS GAS HOSE OXYGEN-8MM-BLUE	BLUE	8mm	OXYGEN	20MPa
GW90050	TAURUS GAS HOSE ACETYLENE-8MM-RED	RED	8mm	ACETYLENE	20MPa
GW90200	TAURUS GAS HOSE LPG-8MM-ORANGE	ORANGE	8mm	LPG	20MPa
GW90250	TAURUS GAS HOSE PROPANE (EPDM)-8MM-ORANGE	ORANGE	8mm	LPG / PROPANE	20MPa
VAGT812PVC	TAURUS COMPRESSOR/ARGON HOSE-8MM-CLEAR	CLEAR	8mm	AIR / ARGON	800KPa
6MM HOSE					
GW90140	TAURUS GAS HOSE OXYGEN-6MM-BLUE	BLUE	6mm	OXYGEN	20MPa
GW90040	TAURUS GAS HOSE ACETYLENE-6MM-RED	RED	6mm	ACETYLENE	20MPa
VAGT811PVC	TAURUS COMPRESSOR/ARGON HOSE-6MM-CLEAR	CLEAR	6mm	AIR / ARGON	800KPa



TAURUS industrial cylinder trolleys are robust and designed for heavy-duty use. Gas cylinders are chain-safely housed and the 200mm solid rubber wheels add to easy and smooth handling and movability.

PRODUCT CODE	DESCRIPTION	CYLINDER TYPE	MAXIMUM LOAD RATING	CYLINDER QUANTITY
TROLLEY01	TAURUS DOUBLE OXY & ACY TROLLEY	OXY & ACE	225 KG	2
TROLLEY02	TAURUS SINGLE 48KG LPG TROLLEY	48KG LPG	150 KG	1
TROLLEY03	TAURUS DOUBLE LPG & OXY TROLLEY	OXY & 48KG LPG	225 KG	2
TROLLEY04	TAURUS SINGLE OXY & ACY TROLLEY	OXY / ACE	150 KG	1



NOZZLE CLEANER

The TAURUS nozzle cleaner is fitted with a selection of abrasive miniature wire brushes ranging from 0.8mm diameter to 3.2mm diameter. The set is encased in a strong aluminium container and includes a small file. The abrasive brushes remove carbon buildup and loosen slag from nozzles.



FLINT SPARK LIGHTER

The TAURUS triple-flint lighter creates a spark which ignites fuel gas from cutting, brazing or heating torches. The easy one-hand-prong-squeeze operation allows the grinding, long-lasting flint to spark. Once worn, the flint replacement is an easy operation. TAURUS triple flint refills are compatible with most other flint lighters.

PRODUCT CODE	DESCRIPTION
	<u>TRIPLE FLINT LIGHTER</u>
TFL	TAURUS TRIPLE FLINT LIGHTER
TFS	TAURUS TRIPLE FLINT SPARE
	<u>NOZZLE CLEANER</u>
TC-09	TAURUS NOZZLE CLEANER

TAURUS Y-PIECES WITH VALVES



The TAURUS Y-PIECE with valve fittings has a single-line inlet and dual-line outlet connectors allowing two hoses running from one gas regulator source. The dual outlet connection is fitted with two valves allowing independent control of each line.

PRODUCT CODE	DESCRIPTION	INLET CONNECTION THREAD	OUTLET CONNECTION THREAD	GAS
YP-ACY-3/8	TAURUS ACY Y PIECE WITH VALVE 3/8	3/8" lh	3/8" lh	ACETYLENE + LPG
YP-OXY-3/8	TAURUS OXY Y PIECE WITH VALVE 3/8	3/8" rh	3/8" rh	OXYGEN + ARGON + CO2





TAIL PIECES AND TAIL NUTS

TAURUS tail pieces and tail nuts, also known as nipples and tail nuts, are manufactured from high-quality brass. Their function as a set is to connect gas hoses to gas equipment such as torches, flashbacks and regulators. In order to avoid gas leaks it is important to ensure that matching tail pieces and tail nuts as well as the correct size nipples that fit the hose size, are used. Gas leaks can result in injury or death.

ADAPTORS

TAURUS adapters convert 3/8" thread to 9/16 thread and vice versa and allows connection of gas equipment with differing thread sizes.

PRODUCT CODE	DESCRIPTION	CONNECTION THREAD	INLET THREAD	OUTLET THREAD
<u>3/8" TAIL NUT AND TAIL PIECE</u>				
TP8MM	TAURUS TAILPIECE-8MM HOSE FOR 3/8	3/8"	-	-
TP6-8MM	TAURUS TAILPIECE FOR 6&8MM HOSE FOR 3/8	3/8"	-	-
O2NT	TAURUS NUT (3/8) -RH-OXYGEN	3/8" rh	-	-
DANT	TAURUS NUT (3/8)-LH-ACETYLENE	3/8" lh	-	-
<u>9/16" TAIL NUT AND TAIL PIECE</u>				
TPHS	TAURUS TAILPIECE-8MM HOSE FOR 9/16	9/16"	-	-
TP6MM	TAURUS TAILPIECE-6MM HOSE FOR 9/16	9/16"	-	-
OXYNUT-HS	TAURUS NUT (9/16)-RH-OXYGEN	9/16" rh	-	-
ACNUT-HS	TAURUS NUT (9/16)-LH-ACETYLENE	9/16" lh	-	-
<u>ARGFLCR FLOWMETER NUT AND TAIL PIECE</u>				
TPCR	TAURUS TAILPIECE FOR ARGFLCR FLOWMETER-6MM HOSE	-	-	-
CRNT	TAURUS NUT FOR ARGFLCR FLOWMETER	-	-	-
<u>ADAPTORS</u>				
237-065	ACETYLENE ADAPTOR LH 3/8 TO 9/16	-	3/8" lh	9/16" lh
237-066	OXYGEN ADAPTOR RH 3/8 TO 9/16	-	3/8" rh	9/16" rh
237-067	ACETYLENE ADAPTOR LH 9/16 TO 3/8	-	9/16" lh	3/8" lh
237-068	OXYGEN ADAPTOR RH 9/16 TO 3/8	-	9/16" rh	3/8" rh
<u>HOSE JOINERS</u>				
HOSE-CON	TAURUS 8MM HOSE JOINER	-	-	-



O - CLAMPS

The Oetiker style clamp has two ears that needs to be crimped once the tail piece is connected to the gas hose. In order to reduce the risk of hose damage, the clamp edges are deburred. It is also considered to be a safer option to the traditional screw-type hose clamp. For safety reasons it is important that the correct size O-CLAMP is used for the hose size and that the clamp is securely crimped to the hose.



PARALLEL HOSE CLAMPS

Parallel hose clamps keep two gas hoses running together in parallel. A parallel clamp fitted every 750mm will keep the hoses neatly together and will prevent unnecessary damage.

PRODUCT CODE	DESCRIPTION	HOSE SIZE	FASTEN TYPE
	<u>CLAMPS FOR GAS HOSE</u>		
02.30.501.2	OETIKER CLAMP 13-15 - 2 EAR - 6MM HOSE	6mm	CRIMP
02.30.501.4	OETIKER CLAMP 15-18 - 2 EAR - 8MM HOSE	8mm	CRIMP
02.30.501.6	OETIKER CLAMP 17-20 - 2 EAR - 10MM HOSE	10mm	CRIMP
	<u>CLAMPS FOR TIG AND MIG TORCH HOSE</u>		
02.30.501.5	OETIKER CLAMP 9-11 - 2 EAR - 6MM HOSE	-	CRIMP
02.30.501.1	OETIKER CLAMP 9.5MM - 1 EAR WITH INSERT	-	CRIMP
02.30.501.3	OETIKER CLAMP 8.7MM - 1 EAR WITH INSERT	-	CRIMP
02.30.501.7	OETIKER CLAMP 8MM - 1 EAR WITH INSERT	-	CRIMP
	<u>PARALLEL CLAMPS</u>		
PC01	PARALLEL CLAMP-8MM	8mm	CLIP-ON

TAURUS REGULATOR CONNECTIONS AND ADAPTORS



BULLNOSE NUTS AND STEMS

TAURUS bullnose nuts and stems are precision engineered and manufactured from high-quality brass. Resulting from disconnection and reconnection of regulators from and to gas cylinders, bullnose nuts and stems wear out over time. In order to ensure secure fitting of the regulator to the gas cylinder valve, the following check procedure should be followed:

- Threads should not be stripped or worn and the nut should screw in freely.
- The hexagonal edges of the bullnose nut should be sharp ensuring a secure spanner grip to tighten the nut.
- The stem should have no flaws or markings. If so, it will not fit flush in the cylinder valve resulting in gas leakage.

BULLNOSE NUT CYLINDER ADAPTOR

- CO2 to argon adapter allows the connection of an argon flow meter to a CO2 cylinder.

PRODUCT CODE	DESCRIPTION	CONNECTION THREAD	REGULATOR
	<u>BULLNOSE NUT</u>		
BN/02NUT	TAURUS BULLNOSE NUT - OXYGEN	rh 5/8" BSP-M	02REG
BN/ACNUT	TAURUS BULLNOSE NUT - ACETYLENE	lh 5/8" BSP-M	DAREG
BNN001	TAURUS BULLNOSE NUT - NITROGEN	rh 3/4" BSP-M	N2REG
	<u>BULLNOSE STEM</u>		
BN/STEM	TAURUS BULLNOSE INLET - SINGLE STAGE REG-O2/AC	-	02REG + DAREG + N2REG
BN/02STEM	TAURUS BULLNOSE INLET - DOUBLE STAGE REG-O2/AC	-	DS/02REG + DS/DAREG
	<u>BULLNOSE NUT ADAPTOR</u>		
CO2-ADAPTOR	CO2 TO ARGON ADAPTOR + WASHER	rh 0.86"-F TO rh 5/8"-F	ARGON
	<u>MINIPAK BULLNOSE NUT AND STEM</u>		
BN/02STEM-MP	TAURUS MINIPAK BULLNOSE STEM - OXYGEN	-	MPO2REG
BN/ACSTEM-MP	TAURUS MINIPAK BULLNOSE STEM - ACETYLENE	-	MPDAREG
BN/02NUT-MP	TAURUS MINIPAK BULLNOSE NUT - OXYGEN	rh 11/16"	MPO2REG
BN/ACNUT-MP	TAURUS MINIPAK BULLNOSE NUT - ACETYLENE	lh 11/16"	MPDAREG
BN/O2-KIT-MP	TAURUS MINIPAK BULLNOSE NUT/STEM/O-RING - OXYGEN	-	MPO2REG
BN/AC-KIT-MP	TAURUS MINIPAK BULLNOSE NUT/STEM/O-RING - ACETYLENE	-	MPDAREG
BN/O-MP	TAURUS MINIPAK BULLNOSE O-RING - OXY/ACY	-	MPO2REG + MPDAREG

TAURUS CUTTING TORCH NOZZLE NUTS



TYPE 2 AND UNIVERSAL CUTTING TORCH NUT
Replacement nozzle nut for the TYPE 2 and UNIVERSAL CUTTING TORCH.

PRODUCT CODE	DESCRIPTION	TORCH
CTT-HD-TN	TAURUS TIP NUT - UNIVERSAL CUTTING TORCH	UNIVERSAL + TYPE 2



GAS EQUIPMENT AND ACCESSORIES



11 Venda Road, Unit 6, Sebenza, Edenvale, Gauteng

011-392-5661

order@cut-n-weld.co.za

www.cut-n-weld.co.za

BROCHURES AVAILABLE

SAFETY EQUIPMENT FOR PPE & ONSITE

WELDING EQUIPMENT & ACCESSORIES

GAS EQUIPMENT & ACCESSORIES

WELDING & PLASMA MACHINES

PLASMA TORCH & ACCESSORIES

MIG TORCH & ACCESSORIES

TIG TORCH & ACCESSORIES

WELDING CONSUMABLES